



**£490,000**

**Paddington Close**

Hayes, UB4 9QH

## PROPERTY SUMMARY

\*\* PLANNING PERMISSION APPROVED \*\* An Immaculate Two Double Bedroom House With Planning Approved To Extend Further.

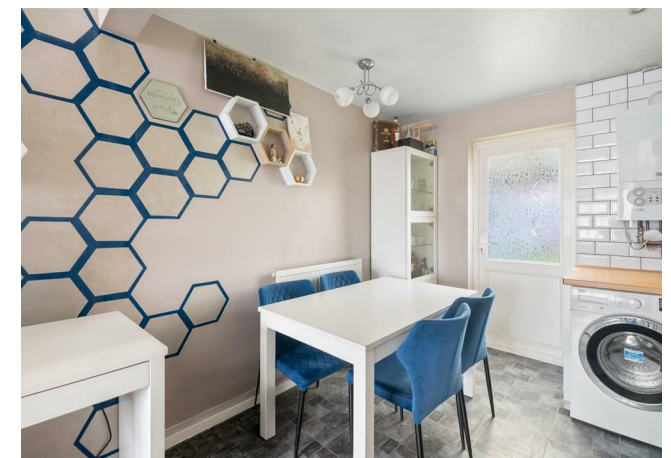
2



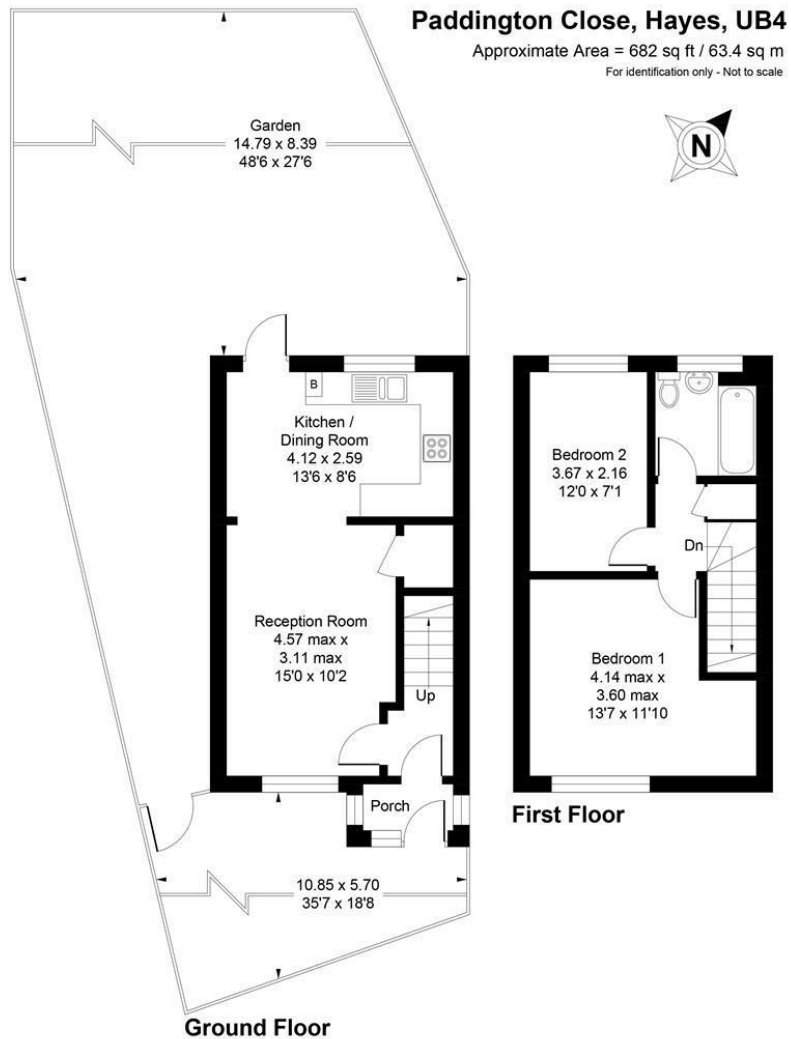
1



1







Floor plan produced in accordance with RICS Property Measurement Standards incorporating International Property Measurement Standards (IPMS2 Residential). ©Vizion Property Marketing 2026. Produced for Allday & Miller.

**ALLDAY & MILLER**  
 estate agents

**LOCAL AUTHORITY**

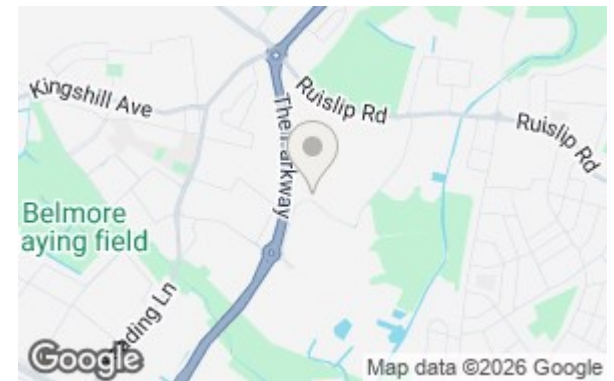
**TENURE**

**COUNCIL TAX BAND**

**VIEWINGS**

By prior appointment only

Energy Efficiency Rating		Current	Potential
Very energy efficient - lower running costs			
(92 plus) <b>A</b>			
(81-91) <b>B</b>			
(69-80) <b>C</b>		76	81
(55-68) <b>D</b>			
(39-54) <b>E</b>			
(21-38) <b>F</b>			
(1-20) <b>G</b>			
Not energy efficient - higher running costs			
<b>England &amp; Wales</b>		EU Directive 2002/91/EC	



Agents Note: Whilst every care has been taken to prepare these particulars, they are for guidance purposes only. All measurements are approximate and are for general guidance purposes only and whilst every care has been taken to ensure their accuracy, they should not be relied upon and potential buyers/tenants are advised to recheck the measurements

**Shaw & Co**  
 ESTATE AGENTS

**OFFICE ADDRESS**  
 10 Central Parade  
 New Heston Road  
 Heston  
 Middlesex  
 TW2 0LJ

**OFFICE DETAILS**  
 0208 570 7258  
 heston@shawandcoestates.com